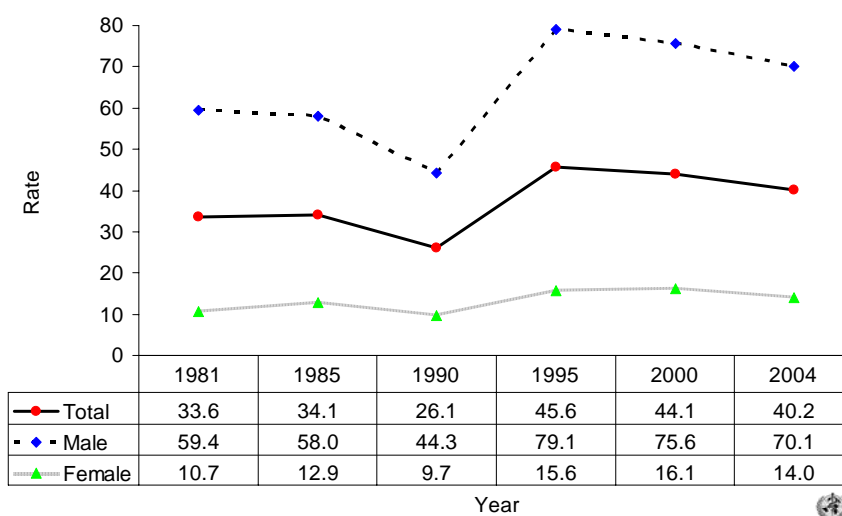
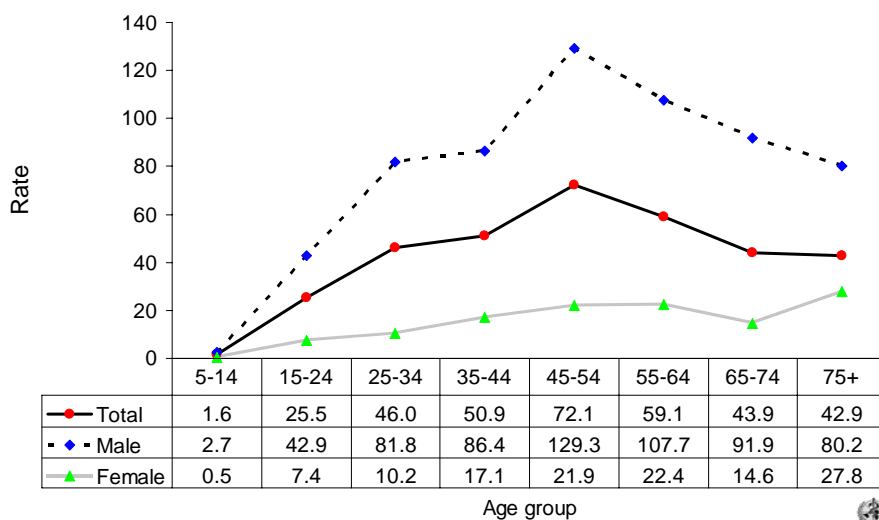


Suicide rates (per 100,000), by gender, Lithuania, 1981-2004.



Suicide rates (per 100,000), by gender and age, Lithuania, 2004.



Number of suicides by age group and gender. LITHUANIA, 2004.

Age (years)	5-14	15-24	25-34	35-44	45-54	55-64	65-74	75+	All
Males	6	115	193	221	270	163	108	48	1124
Females	1	19	24	46	52	45	28	41	257
Total	7	134	217	267	322	208	136	89	1381