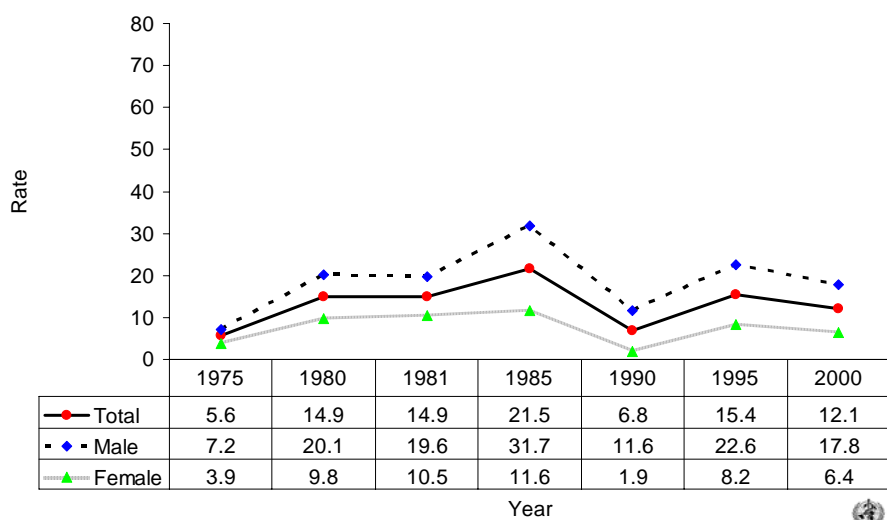
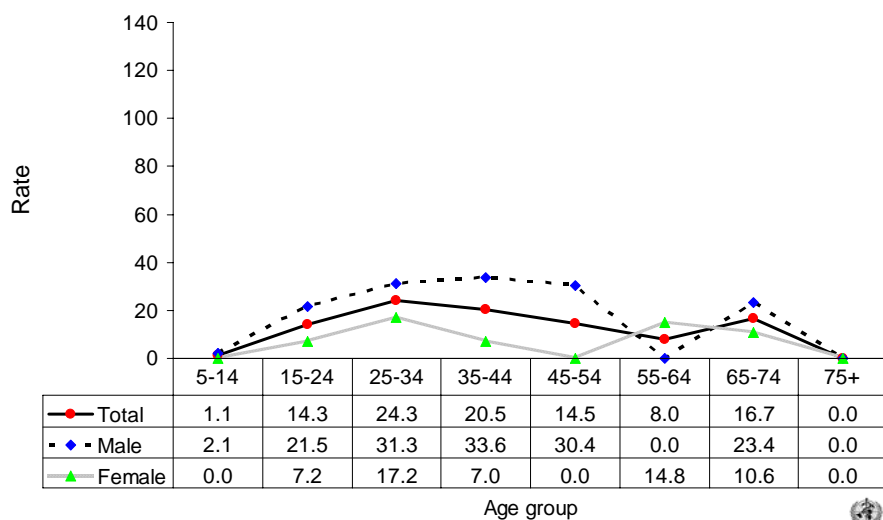


Suicide rates (per 100,000), by gender, Suriname, 1975-2000.



Suicide rates (per 100,000), by gender and age, Suriname, 2000.



Number of suicides by age group and gender. SURINAME, 2000.

| Age (years) | 5-14 | 15-24 | 25-34 | 35-44 | 45-54 | 55-64 | 65-74 | 75+ | All |
|-------------|------|-------|-------|-------|-------|-------|-------|-----|-----|
| Males | 1 | 9 | 11 | 10 | 5 | 0 | 2 | 0 | 39 |
| Females | 0 | 3 | 6 | 2 | 0 | 2 | 1 | 0 | 14 |
| Total | 1 | 12 | 17 | 12 | 5 | 2 | 3 | 0 | 53 |