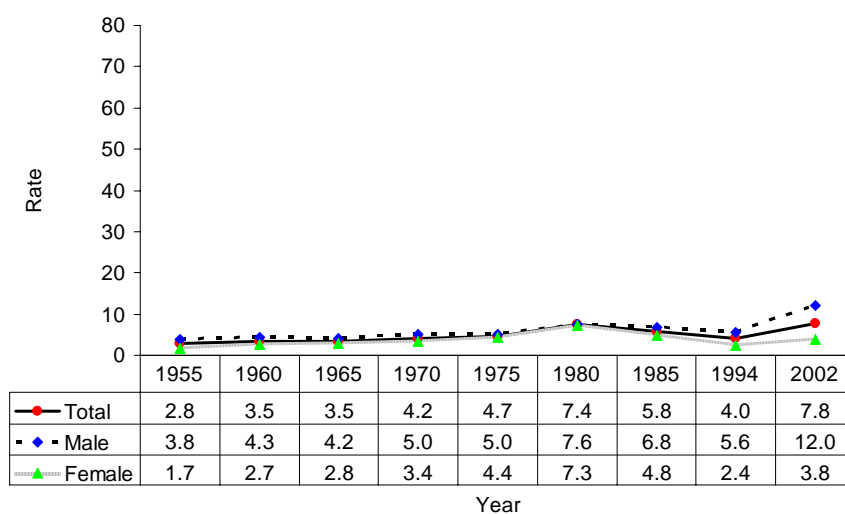
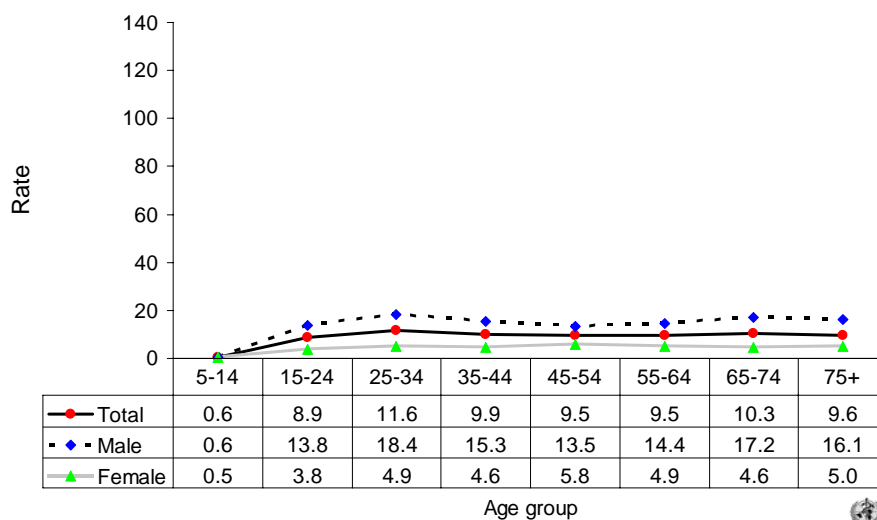


Suicide rates (per 100,000), by gender, Thailand, 1955-2002.



Suicide rates (per 100,000), by gender and age, Thailand, 2002.



Number of suicides by age group and gender. THAILAND, 2002.

Age (years)	5-14	15-24	25-34	35-44	45-54	55-64	65-74	75+	All
Males	33	743	1063	789	463	295	227	99	3715
Females	22	199	287	244	212	110	73	43	1190
Total	55	942	1350	1033	675	405	300	142	4905